



# Indiana University courses using Top Hat see Lower Student Withdrawal Rate

**11.5% Lower**

## The Research

IU and Top Hat are collaborating to explore the impact instructors have made on student outcomes using the Top Hat platform.

Approved by the Institutional Review Board (IRB), data stewards from IU and Top Hat analyzed trends from thousands of courses from the Spring, Summer, and Fall semesters of 2023. After filtering the dataset, 235 unique Top Hat courses from across disciplines were compared against 235 equivalent courses that did not use Top Hat.

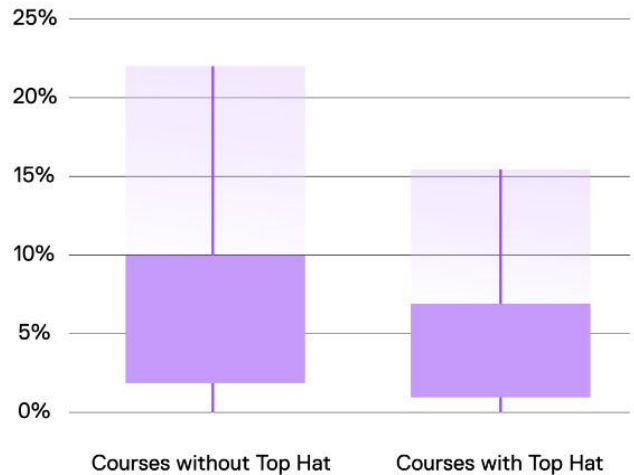
## The Findings

The researchers observed that courses where Top Hat was used had an **11.5% lower** mean student withdrawal rate than similar courses where Top Hat was not used.

This is only the beginning. Analysis will continue with exploration of how the platform supports equitable access to learning, improves engagement, and contributes to closing achievement gaps.

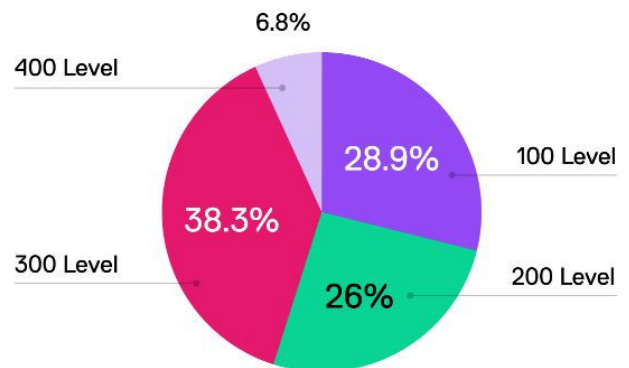
\*The 11.5% relative difference between withdrawal rates was calculated by dividing 0.77% (the absolute difference in mean withdrawal rates between the courses that did not use Top Hat and the courses that did) by 6.66% (the mean withdrawal rate of courses that did not use Top Hat), and expressing the result as a percentage.

## Comparing Student Withdrawal Rates

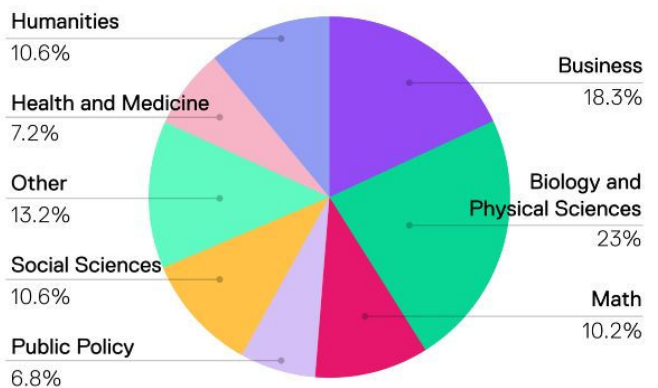


See our methodology\*

## Sampled Courses by Level

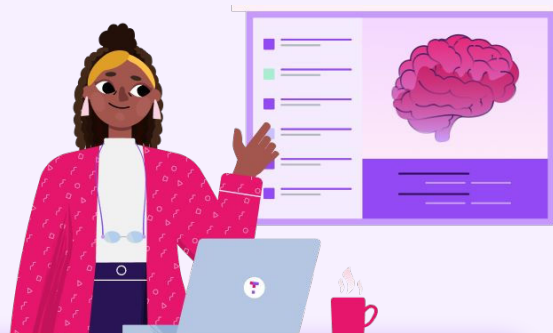


## Sampled Courses By Discipline



# Empowering Educators to Innovate

Equipping educators to adopt new teaching methods was challenging, especially across IU's nine campuses. These activities were key to achieving impact at scale:



## Involve Educators from the Start

IU engaged faculty in tool selection through a pilot program



## Remove Barriers to Innovation

When students don't have to pay out of pocket, educators have freedom to try new things



## Central Support Bolsters Confidence

Educators are confident using tools that are vetted and supported by IT and instructional design teams



## Consistent Training and Resources

Top Hat tailored faculty training programs to the University's language, approach, and preferences

## Partnership Creates Greater Opportunity for Impact

- 2017** • IU makes Top Hat a preferred student engagement system
- 2018** • IU purchases an institution-wide license making the platform available to all students at no cost
- 2019** • Top Hat and IU work closely to generate awareness and support new faculty onboarding and upskilling current users. Adoption grows to more than **40,000 students**
- 2022** • Top Hat becomes one of IU's most used learning tools
- 2024** • Collaboration on joint impact study showing **11.5% lower student** withdrawal rate among courses using Top Hat

Students Using Top Hat at Indiana University

